

JCB NXT 245HDLR

INTELLI
CONTROL

40 FT
DIG DEPTH

51 FT
DIG REACH

THE NXT LEVEL

Engine Power: 104 kW (140 hp) | Bucket Capacity: 0.45 cu.m | Operating Weight: 23,850 kg

JCB

Take your business to THE NXT LEVEL, with the JCB NXT 245HDLR Tracked Excavator.

JCB presents the JCB NXT 245HDLR Tracked Excavators, Powered by IntelliControl and technology to take your business to the NXT level. IntelliControl is a new intelligent way to offer excellent fuel efficiency and productivity, as required by the user, with utmost ease of use and control on the machine operation, maintenance and safety. IntelliControl offers 3 power modes, across 10 engine speed bands and takes best in class fuel efficiency to the NXT level.

With improved reliability and durability, the JCB NXT 245HDLR comes with an advanced telematics system - JCB LiveLink, which is CAN based technology that keeps you connected for total control over machine improving your business efficiency.

Backed by industry's finest customer support network, always look for a better way with JCB.

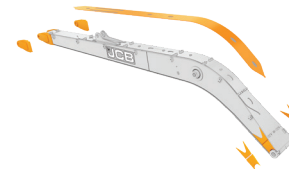
Take your business to THE NXT LEVEL, with the new JCB NXT 245HDLR Tracked Excavators.



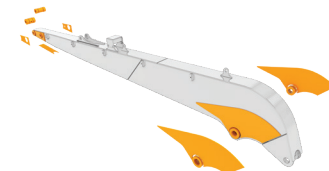
NXT LEVEL OF RELIABILITY

STRENGTH INSIDE AND OUTSIDE.

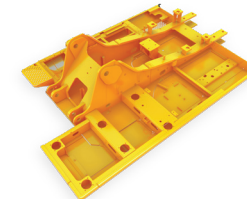
Strengthened top & bottom plates at both ends for high life in arduous applications.



Reinforcements on key locations to enhance life of the arm.



Heavy-duty upper frame with additional strengthening at the bottom.



Heavy-duty LC X-Frame. Strengthened idler and top section.



Proven hydraulic components and filtration system for longer life.



Strong heavy-duty bucket (0.45 cu.m).



NXT LEVEL OF PRODUCTIVITY

GET NXT LEVEL OF PERFORMANCE WITH NEW POWER MODES FOR UNMATCHED OUTPUT.



3 User friendly modes

Power		Usage
P+	Power Plus	Provides maximum output. Suitable for high output in heavy-duty strata.
P	Power	For high output needs.
eco	Economy	For general duty operations & low fuel consumption.



Excellent bucket and arm tear-out forces resulting in higher output.

40 FT
DIG DEPTH

51 FT
DIG REACH

10
WORKING MODES



NXT LEVEL OF EFFICIENCY

THE BEST-IN-CLASS EFFICIENCY WITH ENERGY SAVING **ecoHYDRAULICS** OFFERS NXT LEVEL OF SAVINGS.



ecoHYDRAULICS minimise the hydraulic losses resulting in enhanced fuel efficiency, thus increasing savings.



Optimises engine and hydraulic power to maximise fuel savings.

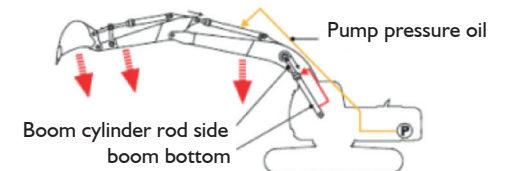


Auto idler reduces engine speed automatically when machine is not at work, thus saving fuel.



one-touch deceleration system, helps to reduce engine rpm by just giving one touch to the switch.

Regenerative hydraulic system



Regenerative circuits for higher operating speeds

*T&C Apply.

NXT LEVEL OF INTELLIGENCE

INTELLI CONTROL IS A NEW INTELLIGENT WAY TO OFFER EXCELLENT FUEL EFFICIENCY AND PRODUCTIVITY WITH THE UTMOST EASE OF USE AND CONTROL.



Operational information



Quantity of fuel left in tank



Engine speed & operating mode status



Trip meter



Auto idle status & time setting



Machine operating parameters



Rear view camera option



Breaker hour meter

Maintenance information



Maintenance due information



Colour coded health alerts based on severity



Hour meter, counting of attachment operation



Easy diagnostic system



Service warning alerts



NXT LEVEL OF CONNECT



NOW BE ASSURED OF YOUR JCB EXCAVATOR'S SERVICE, OPERATION AND SECURITY WITH THE ADVANCED TELEMATICS SYSTEM CALLED LIVELINK.

Security



Fuel level drop alert via SMS/e-mail



Alerts in case the machine is used outside the set hours



Geofencing alerts

Reports & alerts



Customised reports on machine performance



Easier fleet management



Periodic reports

Safety



Engine high rpm shut down report



Long engine idling report



Critical health alerts

Operation & performance monitoring



Idle time monitoring



Instantaneous fuel level monitoring



Working hour monitoring

Proactive maintenance & usage



Maintenance reminders



NXT LEVEL OF EASY MAINTENANCE AND SAFETY

THE JCB NXT 245HD_{LR} ENSURES EASE OF MAINTENANCE AND ALERTS ON DISPLAY.

Class-leading maintenance interval

Service intervals on bucket operation	
Hydraulic oil	Every 5,000 hours
Hydraulic oil filters	Every 1,000 hours
Engine oil & oil filter	Every 500 hours



Critical health alerts



Battery disconnect switch



Service due reminder



Radial seal air filter



2 Go system

First-in-class safety features



Hose burst check valve on boom and arm



Selectable swing lock



Hydraulic accumulator



Hydraulic interlock to start the engine



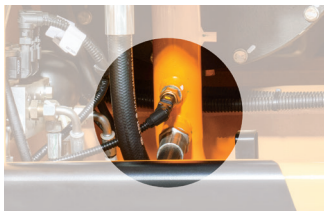
Engine & hydraulic overheat safety system



Advanced self-diagnosis system with error codes and multi-coloured warning alerts for easy and quick maintenance.



Display of all critical parameters accessed through internal menu for easy health monitoring.



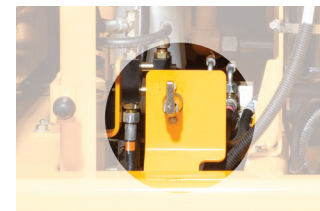
Alerts about high engine coolant temp, low engine oil pressure & high hydraulic oil temperature.



Wire mesh guard on the cooling pack to prevent entry of debris or other objects.



Compact size engine bonnet helps in easy and effortless handling during the maintenance.



Battery disconnect switch helps to isolate the machine's electric system easily, whenever required.

NXT LEVEL OF COMFORT

A COMFORTABLE OPERATOR IS
A PRODUCTIVE OPERATOR.



Rotary switch
controls.



Powerful
AC cabin.



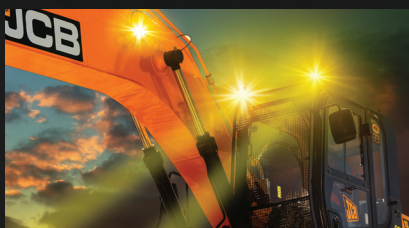
Thin and low
effort joystick.



Better ventilation
and visibility.



Easy to open roof hatch
assisted helps to keep the cab
well ventilated.



5 Working lights for better
illumination and help the operator
to work efficiently.



6 nos. viscous mounts to absorb
vibration that ensures comfort
for the operator.

NXT LEVEL OF CARE

GIVE YOUR MACHINE EXTENDED
WARRANTY AND CARE.

- JCB Careplus is an extended warranty programme that comes into effect after the machine standard warranty expires.
- JCB Careplus can be purchased within the 1st year from the sale of the machine.
- The programme offers you peace of mind and saves your maintenance cost even after your machine standard warranty expires.



Plus

Extended
Warranty
Programme

BENEFITS OF JCB CAREPLUS



No limits on
number of claims



Preventive
maintenance service*



Nationwide
coverage*



JCB skilled
manpower support



Maximum
productivity



Maximum
uptime



Maximum
performance

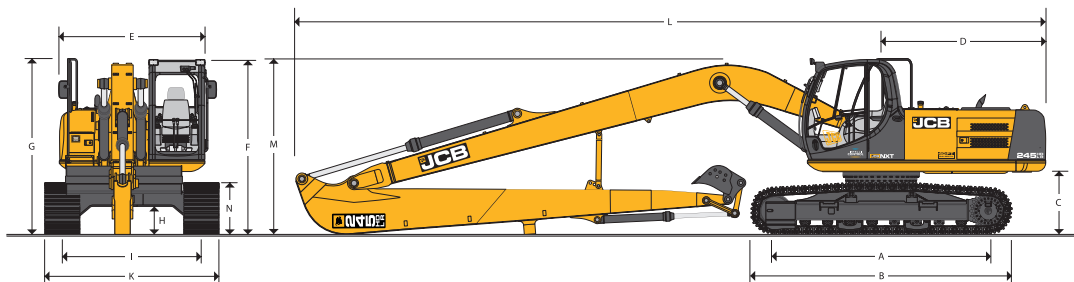


Breakdown
cost protection



Better resale
value

*T&C Apply



WEIGHT AND GROUND BEARING PRESSURE

Standard machine with bucket, operator, full capacity lubes and fuel		
	600mm Track Chain	800mm Track Chain
Max operating weight	23,300 kg	23,850 kg
Ground bearing pressure	0.38 kg / sq cm	0.49 kg / sq cm

STATIC DIMENSIONS

A Track length on ground	m	3.66
B Undercarriage overall length	m	4.47
C Counterweight clearance	m	1.05
D Tail swing radius	m	2.83
E Overall width of the super structure	m	2.55
F Height over cab	m	3.06
G Height over handrail	m	2.78
H Ground clearance	mm	456
I Track gauge	m	2.39
K Width over tracks (600 mm)	m	2.99
Width over tracks (800 mm)		3.19
L Transport length	m	1.26
M Transport height	m	3.05
N Track height	m	890

WORKING RANGE

	Unit	Arm length (6.4 m)
Maximum dig reach	m	15.62
Maximum dig reach at ground level	m	15.51
Maximum digging depth	m	12.04
Maximum digging height	m	12.69
Maximum loadover height	m	10.4
Maximum vertical wall cut depth	m	11.46
Minimum swing radius	m	5.45
Bucket rotation	deg.	182
Bucket breakout force ISO 6015	kN	65.5
Arm breakout force ISO 6015	kN	44

SWING SYSTEM

Swing motor	: Axial piston type.
Swing brake	: Hydraulic braking, electrically operated spring applied disc type parking brake.
Final drive	: Planetary reduction.
Swing gear	: Large diameter, internally toothed fully sealed grease bath lubricated.
Swing speed	: 12 RPM

ENGINE

Model	: CUMMINS6BT 5.9C
Gross Power	: 140 HP @2000 rpm
Piston displacement	: 5.88 L

TRACK DRIVE

Gradeability	: 70% (35 deg.) continuous
Travel speed	: 3.8 km/h
Tractive effort	: 166 kN

EXCAVATOR BUCKET

0.45 cu.m

SERVICE CAPACITIES

Fuel tank	343 L
Engine coolant	25.5 L
Engine oil	19 L
Hydraulic system	203 L
Hydraulic tank	120 L
Swing device	5 L
Travel device	2 x 5 L

UNDERCARRIAGE

	JCB NXT 245HDLR
Track Shoe	600mm /800mm
Upper & lower rollers	Heattreated, sealed and lubricated.
Track adjustment	Sealed and lubricated, with spring enhanced recoil.
No. of track guides	2 per side
No. of lower rollers	8 Per side
No. of upper rollers	2 per side
No. of track shoes	49 per side

HYDRAULIC SYSTEM

Pumps	
Main pumps	: 2 variable displacement axial piston type.
Maximum flow	: 2 x 220 L/min
Servo pump	: Gear type.
Maximum flow	: 20 L/min
Control valve	
Relief valve settings	: 343 bar
Swing circuit	: 240 bar
Travel circuit	: 343 bar
Pilot control	: 40 bar

STANDARD EQUIPMENT

Auto-Idler
 Work lights: 1 each on boom and main frame
 Additional lights: 2 nos. on cab
 Additional lights: 1 no. on counterweight
 Windscreen wiper
 Engine fan guard
 Undercarriage belly guarding
 Upper structure under covers
 Engine pre-cleaner
 Double element radial type air cleaner with wire mesh protection
 Heavy-duty alternator (75 amp)
 Cabin fan
 Suspension seat
 Cab floor mat
 Rubber covered track pedals
 Removable front lower cab glass
 Tool kit
 Handrail and nonslip walk ways
 Radiator fly screen
 FM Radio and USB music player with speakers
 Cabin guard (front)
 Mirror on RH handrail
 Mirror on cab grabrail glass on front and right hand side of cabin
 LiveLink

OPTIONAL EQUIPMENT

Cabin top guard
 Fully ducted air conditioner unit with heater
 First aid kit
 Fire extinguisher
 Refuel pump
 Beacon
 Counterweight mirror

FILTRATION SYSTEM

In-tank	: 150 microns, suction strainer
Main return line	: 10 microns, fibre form element
Pilot line	: 10 microns, paper element.



Towards industry's finest customer support network

5,000+
Trained service engineers

18
Operator training centres

3,000+
Mobile service engineers

250+
Service vans

24x7 Support
12 Languages



60+
Dealers

700+
Outlets

5
Parts warehouses



Connect with us on
JCB Support Face Book Page.

NXT LEVEL OF PARTS SUPPORT

JCB genuine parts offer a comprehensive machine protection solution.



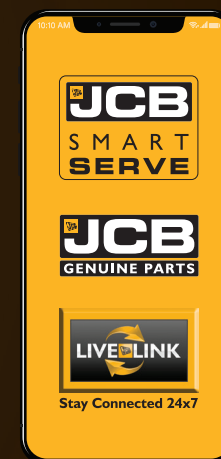
JCB LOYALTY PROGRAMME



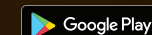
- Instant membership card
- Welcome kit
- Reward points
- Special programme features
- Extended benefits



SMART & DIGITAL SUPPORT



Download from:



LiveLink

Genuine Parts

Dealer's stamp:

JCB INDIA LIMITED B-1/I-1, 2nd Floor, Mohan Co-operative Industrial Estate,
Mathura Road, New Delhi - 110044.

For more information, call our toll free no. **1800-1037-386**

Phone: 011-40539745 Website: www.jcb.com/en-in

Follow us: [f](#) [t](#) [v](#) [i](#) [n](#) /JCBIndiaLtd

Disclaimer: The claims w.r.t. performance, fuel efficiency, reliability and productivity made herein are based on tests conducted in controlled environment against the outgoing JS 20SLR model. The results may vary depending upon various factors like operator's capability, test conditions. The actual machine/equipment may differ from the one reflected herein. T&C apply.

©2009 JCB Sales. All rights reserved. No part of this publication may be reproduced, stored in a retrieval system, or transmitted in any form or by any other means, electronic, mechanical, photocopying or otherwise, without prior permission from JCB Sales. All references in this publication to operating weights, sizes, capacities and other performance measurements are provided for guidance only and may vary dependant upon the exact specification of machine. They should not therefore be relied upon in relation to suitability for a particular application. Guidance and advice should always be sought from your JCB Dealer. JCB reserves the right to change specifications without notice. Illustrations and specifications shown may include optional equipment and accessories. The JCB logo is a registered trademark of J C Bamford Excavators Ltd.

The pictures used and facts given are graphic representations and approximate values. The actual color and numbers may vary.

