

323D3

HYDRAULIC EXCAVATOR

Engine Power

ISO 14396

113 kW (152 hp)

ISO 14396 (DIN)

154 hp (metric)

Operating Weight

22 600 kg (49,800 lb)

The Cat® 323D3 meets UN R96 Stage II emission standards, equivalent to U.S. EPA Tier 2 and EU Stage II.

CAT®

NEXT GENERATION EXCAVATORS

Cat excavators are designed with an approach to equipment families that gives you:

- + MORE MODEL OPTIONS
- + MORE PRICE POINTS

Ready to help you make your business stronger, Cat excavators give you new ways to get the most work done at the lowest cost – so you put more money in your pocket.



CAT[®] 323D3

GET MORE DONE.

Lower your cost per ton.
The **Cat 323D3** Excavator
brings speed, efficiency,
and high productivity to
your heavy-duty, high-
production applications.



MAXIMUM DURABILITY

Ensure productivity in the toughest jobs with a 1.20 m³/1.4 m wide severe-duty bucket, reinforced structures and front parts, and a robust undercarriage and carbody.

UP TO 10% LOWER FUEL CONSUMPTION*

The latest Electro-Hydraulic (EH) system, Eco mode, and optional fuel consumption tracking in VisionLink® provide more control to enable optimized fuel consumption.

UP TO 15% REDUCED MAINTENANCE COSTS**

Maximize uptime and extended service intervals, thanks to advanced hydraulic oil filter design and no pilot and case drain filters. A two-stage fuel filter and anti-rust fuel tank help protect the engine against low-quality fuel.

* Compared to 323D3 model prior to Annual Product Update 2021. Productivity, fuel, and CO₂ emissions vary by application. Estimated average fuel consumption improvements are based on tests or Product Link™ data where available. Productivity improvements are based on test data.

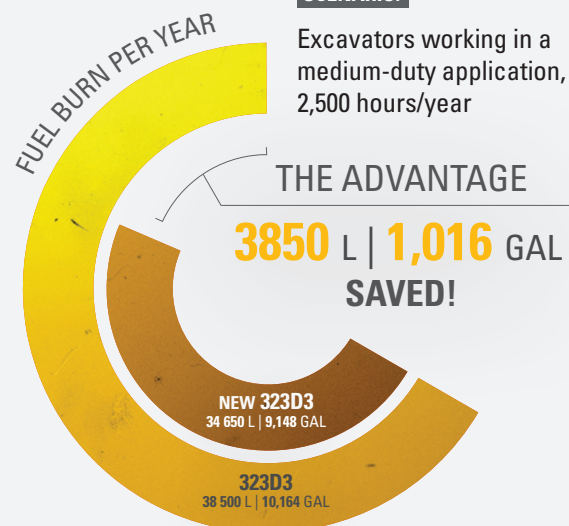
** Compared to 323D3 Prefix FEY.



FUEL EFFICIENCY SAVINGS ADD UP

SCENARIO:

Excavators working in a medium-duty application, 2,500 hours/year



CALCULATION:

323D3:

15.4 L/HR × 2,500 HR/YR = 38 500 L/YR
4.1 GAL/HR × 2,500 HR/YR = 10,164 GAL/YR

NEW 323D3:

(15.4 L/HR × 90%) × 2,500 HR/YR = 34 650 L/YR
(4.1 GAL/HR × 90%) × 2,500 HR/YR = 9,148 GAL/YR



The Cat 323D3 Excavator is designed with your heavy-duty, high-production needs in mind.

GET MORE DONE WITH:

- + New and reinforced bucket resulting in increased performance and longer life.
- + Be productive with a large Cat 1.20 m³ (1.57 yd³) severe-duty abrasive resistance bucket.
- + Dig and lift from a stable platform created by the heavy-duty counterweight and eight-roller undercarriage.





USE UP TO 10%* LESS FUEL

BY ADAPTING YOUR MACHINE TO SUIT YOUR JOB



ECONOMY MODE

See an incremental 10% fuel savings if using ECO mode with no loss of lifting or digging forces. Optional Fuel Flow meter aids in reporting the fuel consumption through VisionLink.



BOOM AND STICK REGENERATION

Boom and stick regeneration circuits reduce fuel consumption by up to 2% while improving cycle times.



AUTO ENGINE SPEED CONTROL

Use automatic engine speed control during no-load or light-load conditions to automatically reduce engine speed to minimize fuel consumption.

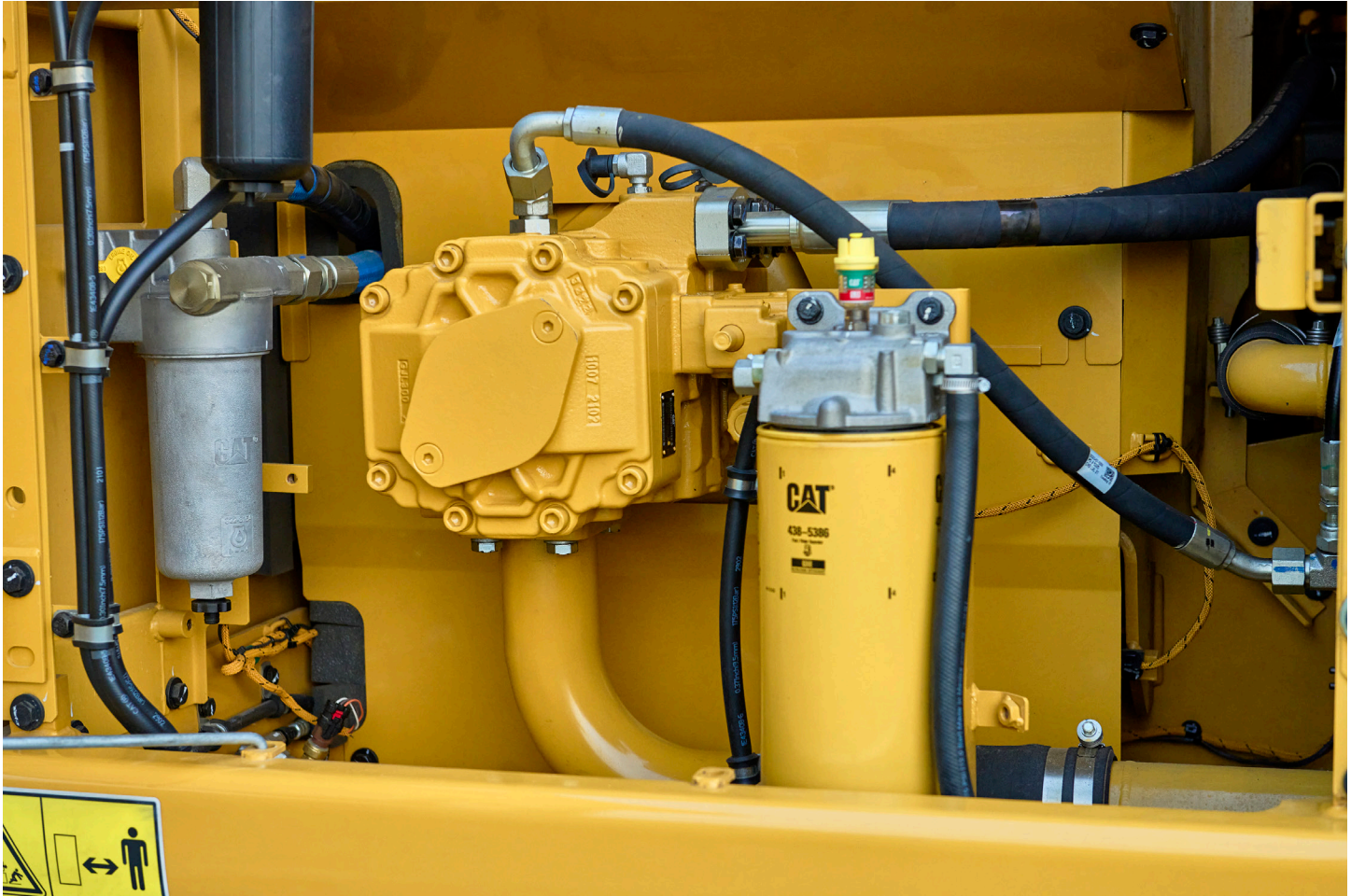


ONE-TOUCH LOW IDLE

Standard one-touch low idle saves fuel by instantly reducing engine speed to 1,000 rpm at the push of a button. Return the engine speed to the throttle position by hitting the button again or simply moving the joysticks.

*Compared to 323D3 prefix FEY. Productivity, fuel, CO₂ emissions vary by application. Estimated fuel consumption improvements are based on engineering calculations and validated by tests.

INCREASE EFFICIENCY WITH AN ELECTRO-HYDRAULIC SYSTEM



HYDRAULIC PUMP AND MAIN VALVE

The electro-hydraulic tandem pump and main valve work together to generate more power, a faster response, and more fuel efficiency than the previous 323D3 model.

EFFICIENT HYDRAULIC SYSTEM

Balance power and efficiency using the open-center, negative flow control hydraulic system. Hydraulic cross-sensing makes full engine power always available from hydraulic pumps regardless of which function is used.

SMART LAYOUT

Put hydraulic power where you need it. Hydraulic system components are positioned close together for optimum efficiency.

LOWER MAINTENANCE COSTS

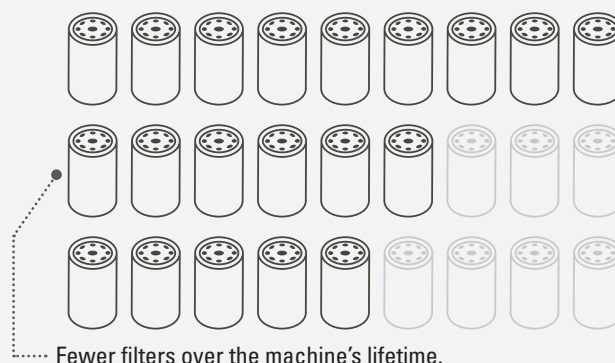
UP TO 15%*

LOWER MAINTENANCE COSTS WITH:

- + An integrated pilot system eliminates the need for a dedicated pilot filter, and the redesigned drain system allows for the elimination of the drain filter
- + The new hydraulic oil filter design provides improved filtration performance and needs replacing only every 3,000 hours
- + Hydraulic oil change interval can go up to 6,000 hours
- + Maintenance-free batteries
- + Easily accessible maintenance locations to reduce service time

FEWER FILTERS MEANS LESS MAINTENANCE

THE **323D3** USES FEWER FILTERS COMPARED TO THE PAST MODELS.



GROUND LEVEL MAINTENANCE

Most service locations are easily accessible at ground level to allow service and maintenance to get completed quickly and efficiently. A service door on the right side of the upper structure allows ground-level access to the hydraulic pumps, hydraulic filters, engine oil filter, and fuel filters.

RADIAL SEAL ENGINE AIR FILTER

Easily access the proven, high-efficiency radial seal engine air filter behind the cab. The machine constantly monitors the engine air filter and will notify you, via the monitor, when service is required.

GREASING MADE EASY

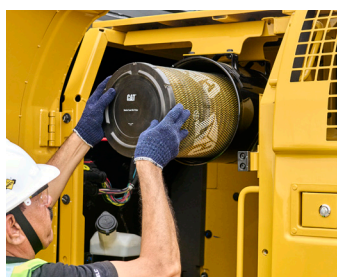
A remote greasing block on the boom allows the greasing of hard-to-reach locations. A remote mounted greasing point on the swing bearing allows ease of service.

SINGLE PLANE DESIGN

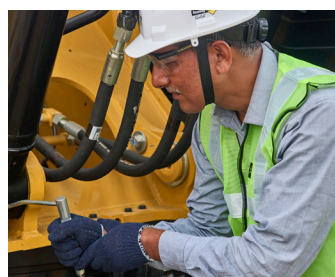
Routine cleaning is made easier with the single plane cooling package design.



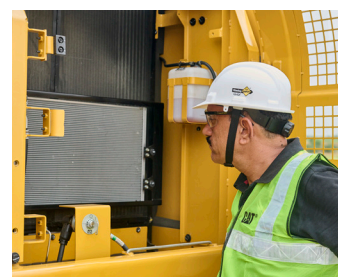
GROUND LEVEL MAINTENANCE



RADIAL SEAL ENGINE AIR FILTER



REMOTE GREASING



SINGLE PLANE COOLING PACKAGE

*Compared to 323D3 Prefix FEY.

PROVEN RELIABILITY THAT DELIVERS PEACE OF MIND

The 323D3 Excavator uses reinforced structures, a heavy-duty, eight-roller undercarriage, and a durable swing system that helps absorb stresses caused by swing torque – delivering a machine you can rely on.



GREASE LUBRICATED UNDERCARRIAGE

Undercarriage rollers are rebuildable and sealed to prevent dirt and debris from causing internal wear. Grease lubricated links minimize internal bushing wear, reducing noise and increasing life up to 25%.

REINFORCED FRONT STRUCTURES

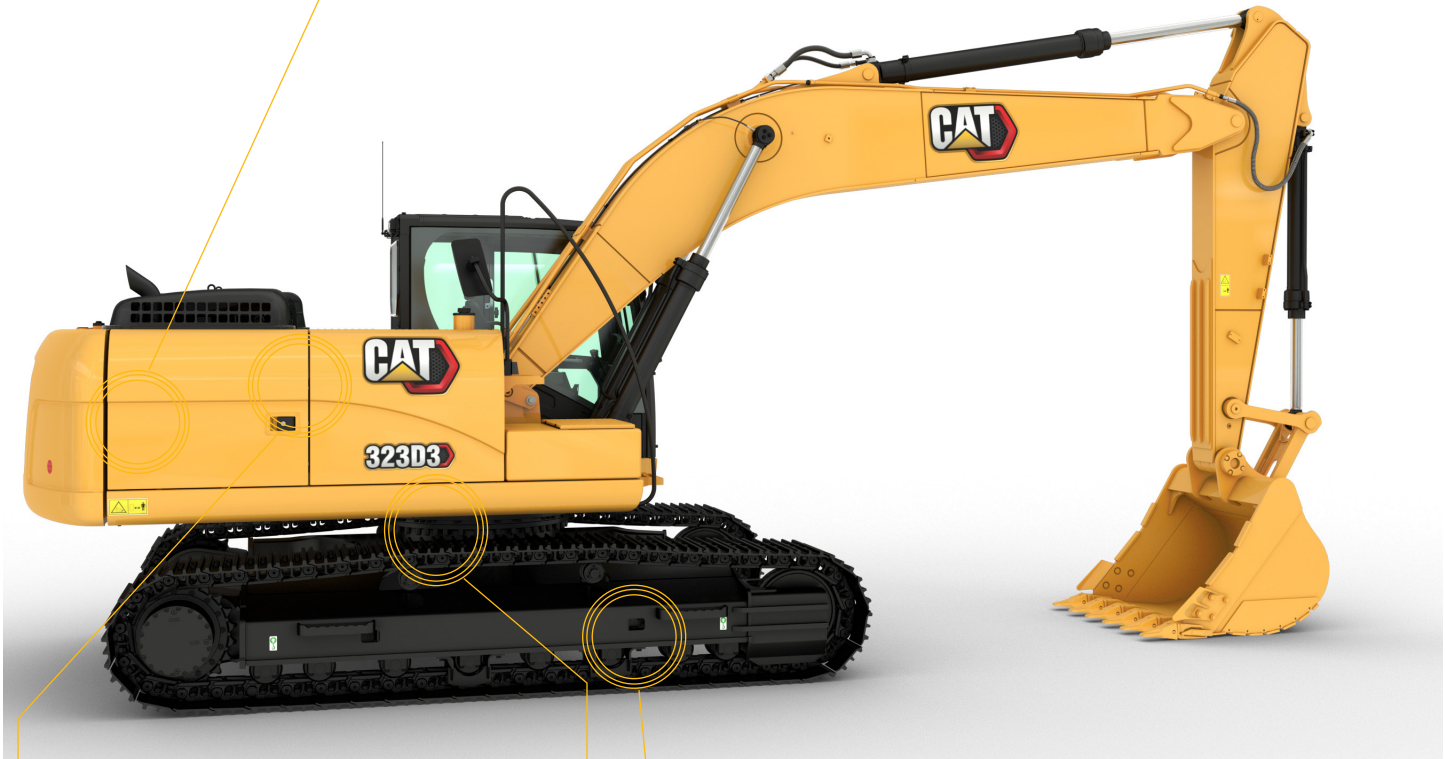
We designed the heavy-duty stick and boom structures using high-tensile steel fabricated into a large box section with internal baffles to absorb torsional stress.

TIME-PROVEN CARBODY

The X-shaped, box-section carbody provides excellent resistance to torsional bending, dissipating stress throughout the base of the machine.

ROBUST FUEL SYSTEM

Expect reliable performance from the double-filtered low-pressure fuel system and anti-rust fuel tank that protects the engine from lower quality fuel. The two-stage filtering system with integrated water separator protects the engine from particles larger than 4 microns.



HYDRAULIC FILTER

Updated hydraulic filter design prevents oil contaminants from entering the system during a filter change. Hydraulic system does not require a pilot filter, eliminating a filter that has to be changed frequently.

GUARDS COME STANDARD

The standard, integrated idler guard helps maintain track alignment while traveling or working on the slopes.

Robust bottom guards protect machine components that might be damaged while swinging. A thicker bottom guard plate is used under the pump compartment to protect the suction hose.

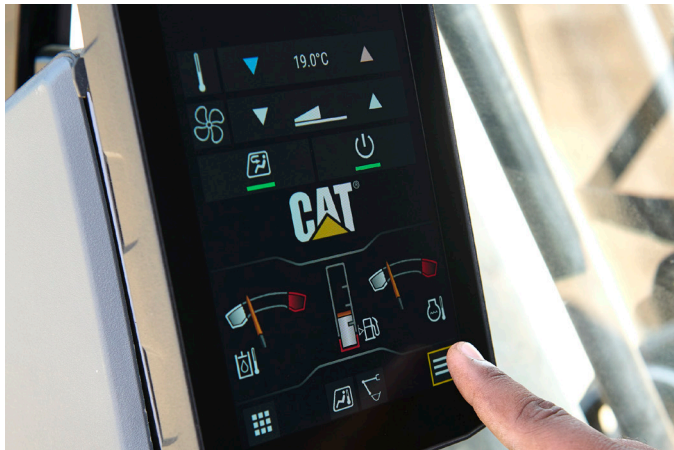
DURABLE SWING SYSTEM

The swing system uses a ball bearing to help absorb stresses caused by swing torque.

WORK IN COMFORT ALL DAY

STAY PRODUCTIVE AND EFFICIENT FROM START TO FINISH

Sites where excavators typically work are rugged and challenging. That's why it's important that the 323D3 cab protects the operator as much as possible from fatigue, stresses, sounds, and temperatures of the job.



VISIBILITY INSIDE AND OUT

INSIDE: Critical machine information is always visible in the high-resolution 203 mm (8 in) touchscreen display. Easy to use, intuitive, and user-friendly menus mean more time working and less time looking for information.

OUTSIDE: The spacious cab provides excellent visibility from the operator's seat to keep you aware of your surroundings – without bending or straining to see.



ADJUST TO SUIT YOUR NEEDS

Work a full day with less fatigue using the ergonomically-designed electro-hydraulic joysticks matched to operator's wrist and arm position. Joystick consoles and seat can be adjusted, further improving operator comfort and productivity for a variety of operator sizes and weights.

Easy-to-access radio controls, engine throttle, wiper controls and Bluetooth® phone pairing for operator convenience.



COMFORTABLE CLIMATE ALL YEAR ROUND

Automatic climate control helps maintain consistent cab temperature. Five outlets ensure proper air circulation to keep you comfortable regardless of outside temperatures.

FEEL SAFE AT WORK

EVERY DAY WITH CAT EXCAVATORS

Caterpillar builds safety into every machine, allowing operators and service technicians to work safely and get home safely every day.

EASY-TO-ISOLATE HYDRAULICS

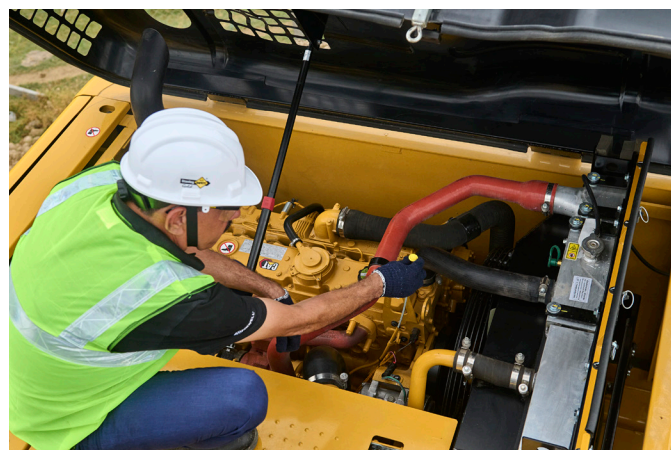
The standard hydraulic lockout lever prevents operators from leaving the cab without first isolating all hydraulic functions. When necessary, you can activate the ground level shutoff switch to stop the fuel to the engine and shut down the machine.



SERVICE SAFELY

The machine provides you a safe work platform for all routine service and maintenance needs. Anti-skid plating with countersunk bolts reduces the potential for slippage and trip hazards.

A battery disconnect switch enhances safety when servicing the machine by isolating the battery.



FULL-LENGTH FIREWALL

A full-length firewall separates the engine from the hydraulic pump and offers protection in the event of an incident.



INCREASE YOUR PRODUCTIVITY AND PROFIT WITH CAT ATTACHMENTS

You can easily expand the performance of your machine by utilizing Cat attachments. Each Cat attachment is designed to fit the weight and horsepower of Cat excavators for improved performance, safety, and stability.



BUCKETS



HYDRAULIC HAMMERS



VISIONLINK®

TAKES THE GUESSWORK OUT OF MANAGING YOUR EQUIPMENT



VisionLink takes the guesswork out of managing your entire fleet – regardless of size or equipment manufacturer.* Review equipment data from your desktop or mobile device to maximize uptime and optimize assets. With interactive dashboards, VisionLink makes it easier for operations of all sizes to make informed decisions that lower costs, simplify maintenance, and improve safety and security on your jobsite. With different subscription-level options, your Cat dealer can help you determine what you need to connect your fleet and manage your business.

*Data field availability can vary by equipment manufacturer.

TECHNICAL SPECIFICATIONS

See cat.com for complete specifications.

ENGINE		
Engine Model	Cat® C7.1	
Biodiesel Capability	Up to B20 ⁽¹⁾	
Net Power – ISO 9249	106 kW	142 hp
Net Power – ISO 9249 DIN	144 hp (metric)	
Engine Power – ISO 14396	113 kW	152 hp
Engine Power – ISO 14396 DIN	154 hp (metric)	
Bore	105 mm	4 in
Stroke	135 mm	5 in
Displacement	7.01 L	428 in³

- The 323D3 meets UN R96 Stage II emission standards, equivalent to U.S. EPA Tier 2 and EU Stage II.
- Recommended for use up to 4000 m (13,120 ft) altitude with engine power derate above 3000 m (9,840 ft).
- Advertised power is tested per the specified standard in effect at the time of manufacture.
- Net power advertised is the power available at the flywheel when the engine is equipped with fan, air intake system, exhaust system and alternator.
- Engine speed at 1,800 rpm.

⁽¹⁾Cat engines are compatible with diesel fuel blended with the following lower-carbon intensity fuels** up to:

- 100% biodiesel FAME (fatty acid methyl ester) * or
- 100% renewable diesel, HVO (hydrotreated vegetable oil) and GTL (gas-to-liquid) fuels. Refer to guidelines for successful application. Please consult your Cat dealer or “Caterpillar Machine Fluids Recommendations” (SEBU6250) for details.

*For use of blends higher than 20% biodiesel, consult your Cat dealer.

**Tailpipe greenhouse gas emissions from lower-carbon intensity fuels are essentially the same as traditional fuels.

HYDRAULIC SYSTEM		
Main System – Maximum Flow	429 L/min	113 gal/min
Maximum Pressure – Equipment	35 000 kPa	5,075 psi
Maximum Pressure – Travel	35 000 kPa	5,075 psi
Maximum Pressure – Swing	25 000 kPa	3,625 psi

SWING MECHANISM		
Swing Speed	11.88 r/min	
Maximum Swing Torque	62 kN•m	45,581 lbf•ft

MACHINE WEIGHTS		
Operating Weight	22 600 kg	49,800 lb

SERVICE REFILL CAPACITIES		
Fuel Tank Capacity	390 L	103 gal
Cooling System	28 L	7.4 gal
Engine Oil	18 L	4.8 gal
Swing Drive (each)	6 L	1.6 gal
Final Drive (each)	5 L	1.3 gal
Hydraulic System (including tank)	218 L	57.6 gal
Hydraulic Tank	115 L	30.4 gal

DIMENSIONS		
Boom	HD Reach 5.7 m (18'8")	
Stick	HD Reach 2.5 m (8'2")	
Bucket	SD 1.20 m³ (1.57 yd³)	
Shipping Height (top of cab)	3050 mm	10 ft
Handrail Height	3015 mm	9.11 ft
Shipping Length	9530 mm	31.3 ft
Tail Swing Radius	2750 mm	9 ft
Counterweight Clearance	1020 mm	3.4 ft
Ground Clearance	450 mm	1.6 ft
Track Length	4460 mm	14.8 ft
Length to Center of Rollers	3650 mm	12 ft
Track Gauge	2380 mm	7.1 ft
Transport Width	2980 mm	9.9 ft

WORKING RANGES AND FORCES		
Boom	HD Reach 5.7 m (18'8")	
Stick	HD Reach 2.5 m (8'2")	
Bucket	SD 1.20 m³ (1.57 yd³)	
Maximum Digging Depth	6300 mm	20.8 ft
Maximum Reach at Ground Level	9470 mm	31.1 ft
Maximum Cutting Height	9250 mm	30.4 ft
Maximum Loading Height	6290 mm	20.8 ft
Minimum Loading Height	2590 mm	8.6 ft
Maximum Depth Cut for 2440 mm (8'0") Level Bottom	5960 mm	19.7 ft
Maximum Vertical Wall Digging Depth	5720 mm	18.9 ft
Bucket Digging Force (ISO)	147 kN	33,050 lbf
Stick Digging Force (ISO)	111 kN	24,950 lbf

STANDARD & OPTIONAL EQUIPMENT

Standard and optional equipment may vary. Consult your Cat dealer for details.

UNDERCARRIAGE AND STRUCTURES	STANDARD	OPTIONAL
600 mm (24 in) triple grouser shoes (12 mm/0.5 in thick)	•	
Grease lubricated track links	•	
Tie down points on base frame	•	
Center track guiding guard	•	
Segmented HD track guiding guard	•	
Heavy-duty track rollers	•	
4000 kg (8,820 lb) counterweight	•	
4460 mm (14'8") long undercarriage	•	
600 mm (24") triple grouser shoes (10 mm/0.4" thick)		•
Full length track guiding guard		•
CAB	STANDARD	OPTIONAL
Sound suppressed cab with viscous mounts	•	
High-resolution 203 mm (8") LCD touchscreen monitor	•	
Mechanically adjustable seat with headrest	•	
Automatic bi-level air conditioner	•	
Keyless push-to-start engine control	•	
1-button joystick	•	
AM/FM radio with USB and auxiliary port	•	
24V DC outlet	•	
Cup holder and storage compartments	•	
70/30 tempered glass windshield	•	
Upper radial wiper with washer	•	
Openable steel hatch	•	
Dome light	•	
Washable floor mat	•	
3-button joystick		•
ENGINE	STANDARD	OPTIONAL
Diesel engine, C7.1 1106C – mechanical governor – meets UN R96 Stage II, equivalent to Tier 2 and Stage II	•	
Two selectable power modes: Standard, Eco	•	
One-touch low idle with auto engine speed control (AEC)	•	
Two stage fuel filtration system with water separator and indicator	•	
52° C (125° F) high-ambient cooling capacity	•	
4000 m (13,120 ft) altitude capability	•	
Radial seal air filter with double filter element	•	
Electric fuel priming pump	•	
Biodiesel capability (up to B20)	•	
–32° C (–25° F) cold start capability		•
Air pre-cleaner		•
Engine fuel flow meter		•

BOOM AND STICK	STANDARD	OPTIONAL
5.7 m (18'8") HD Reach boom	•	
2.5 m (8'2") HD Reach stick	•	
ELECTRICAL SYSTEM	STANDARD	OPTIONAL
Two 750 CCA maintenance free batteries	•	
Centralized electrical disconnect switch	•	
LED chassis and cab lights	•	
LED left-side boom light	•	
LED right-side boom lights		•
SERVICE AND MAINTENANCE	STANDARD	OPTIONAL
Engine oil, fuel, and hydraulic oil filters grouped for ease of maintenance	•	
Scheduled Oil Sampling (S•O•S SM) ports	•	
Radiator screen for radiator/oil cooler	•	
HYDRAULIC SYSTEM	STANDARD	OPTIONAL
Electronic main control valve, hammer ready	•	
Back-to-back electronic pump	•	
Boom and stick regeneration circuits	•	
Automatic hydraulic warm up	•	
Automatic two-speed travel	•	
High performance hydraulic return filter	•	
Hammer lines		•
Hammer return filter		•
TECHNOLOGY	STANDARD	OPTIONAL
VisionLink®	•	
SAFETY AND SECURITY	STANDARD	OPTIONAL
Anti-skid plating with countersunk bolts	•	
Handrail and handhold	•	
Lockable external tool/storage box	•	
Signaling/warning horn	•	
Hydraulic lockout lever	•	
ROPS		•
OPG with matching lights		•
Rearview camera		•
Travel alarm		•

Not all features are available in all regions. Please check with your local Cat dealer for specific offering availability in your area.
For additional information, refer to the Technical Specifications brochures for the 323D3 available at www.cat.com or your Cat dealer.

For more complete information on Cat products, dealer services and industry solutions, visit us on the web at www.cat.com

VisionLink is a trademark of VirtualSite Solutions LLC, registered in the United States and in other countries.

Materials and specifications are subject to change without notice. Featured machines in photos may include additional equipment. See your Cat dealer for available options.

© 2023 Caterpillar. All Rights Reserved. CAT, CATERPILLAR, LET'S DO THE WORK, their respective logos, Product Link, S•O•S, "Caterpillar Corporate Yellow", the "Power Edge" and Cat "Modern Hex" trade dress as well as corporate and product identity used herein, are trademarks of Caterpillar and may not be used without permission.

AEXQ2416-03 (11-2023)
Replaces AEXQ2416-02
(India)

